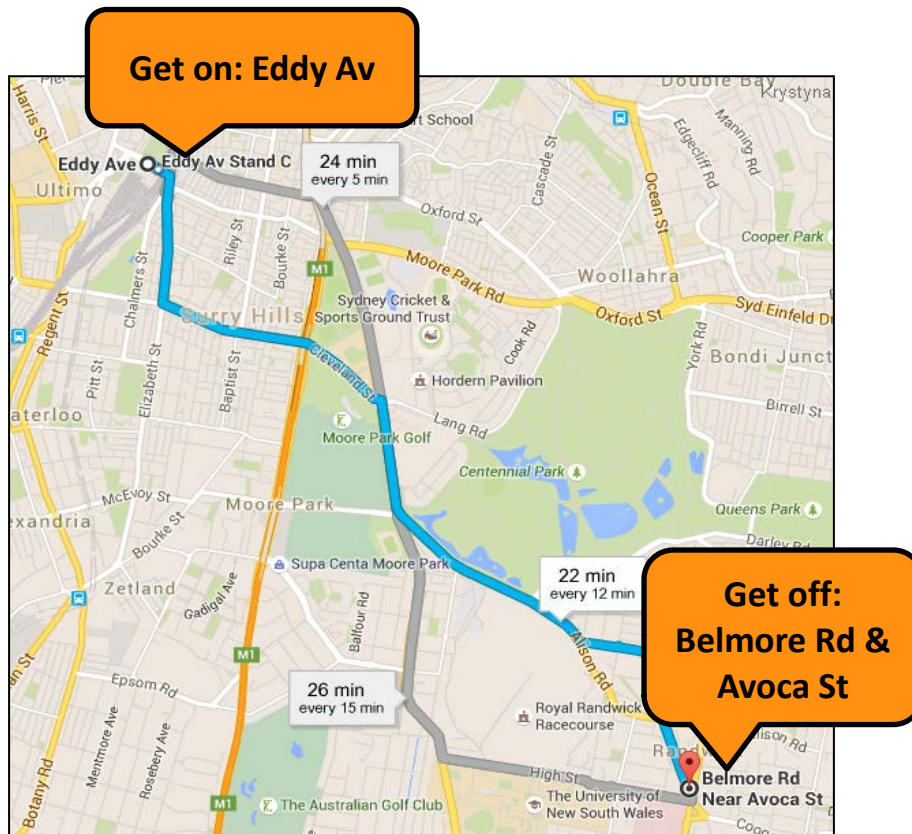


**Bus: 372, 376**  
(towards Coogee)

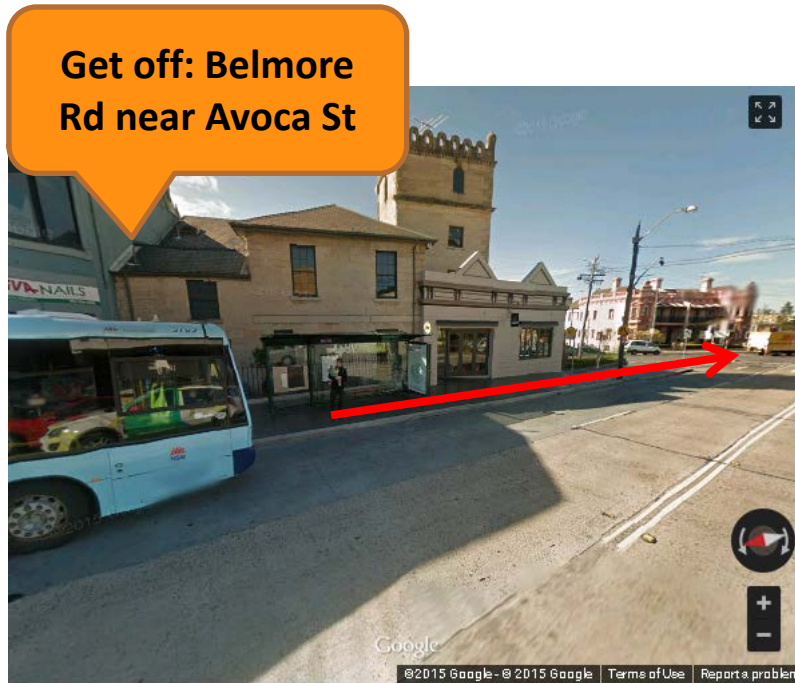
**Get on: Eddy Av Stand C**

**Get off: Belmore Rd near  
Avoca St**

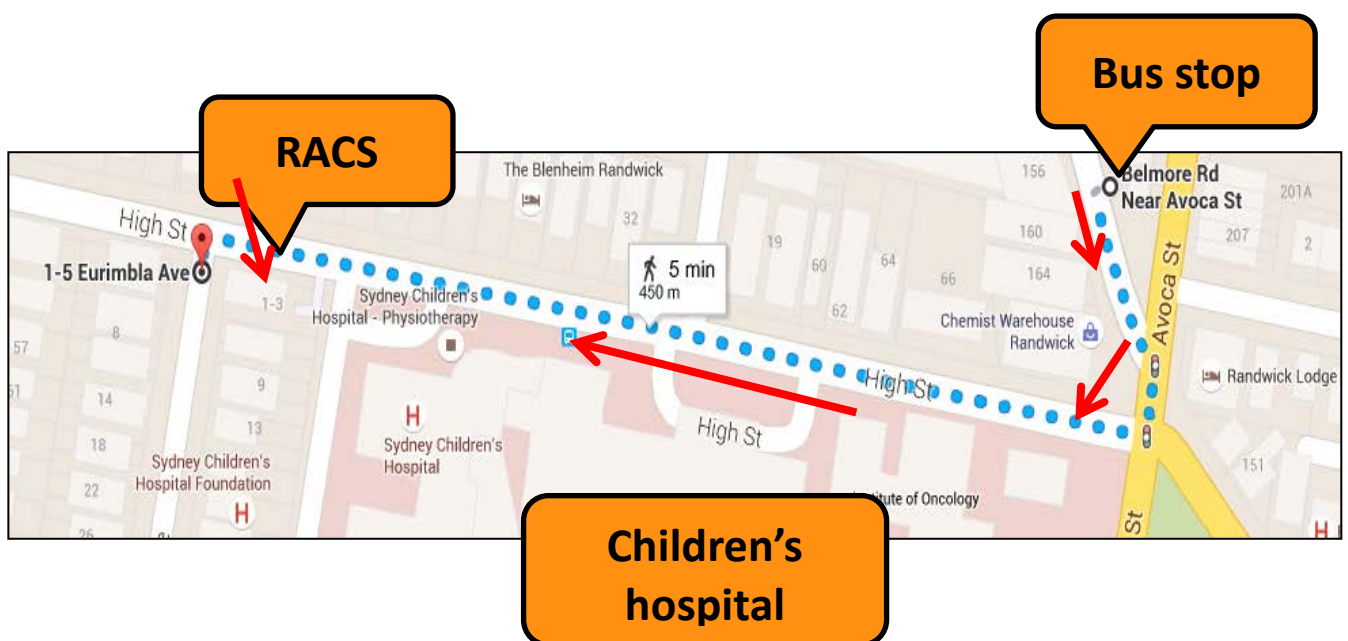
**Directions:** Exit the Central station towards the Eddy Avenue.



Bus departs from the **stand C every 12 min**. It will take 20 minutes and approximately 20 stops to get to RACS office. Get off at **Belmore Rd near Avoca St**



When get off the bus, Walk down the Belmore Rd towards Avoca St, Slight right onto Avoca St and then Turn right onto High St. Continue on the High Street for 300 m. You will walk past the Children's Hospital on your left. Straight after the Hospital, turn left. RACS office is just round the corner. Total walk will take 5 minutes.



**Children's hospital**



**RACS**

**RACS office  
1-3 Eurimbla Av**

